

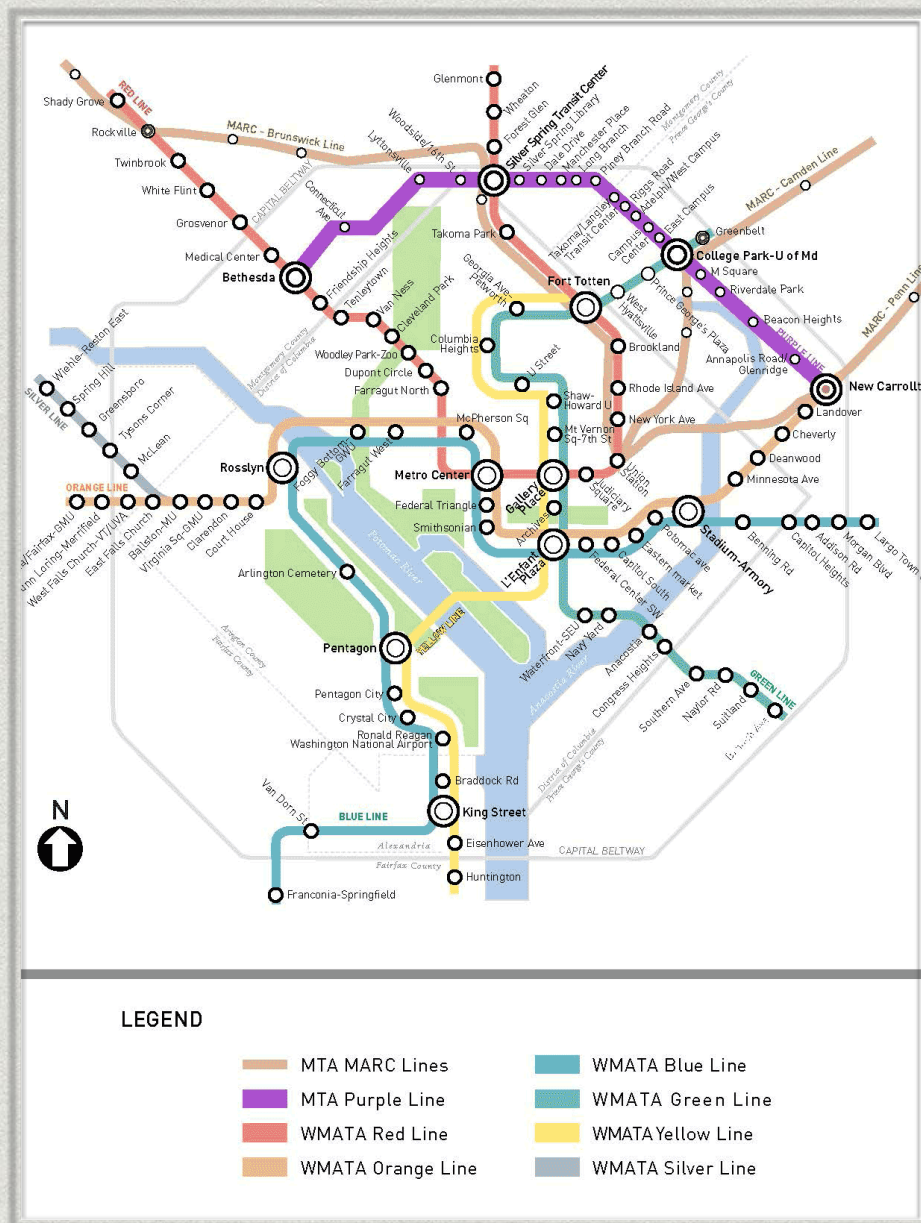
PURPLE LINE BUSINESS MEETING

MONTGOMERY & PRINCE GEORGE'S COUNTIES
FEBRUARY 4, 2015

AGENDA

- * PROJECT OVERVIEW
- * BENEFITS & GOALS
- * PROJECT STATUS
- * ECONOMIC IMPACT

OVERVIEW: PURPLE LINE



- 16 Mile Light Rail from Bethesda (Montgomery County) to New Carrollton (Prince George's County) with 21 planned stations

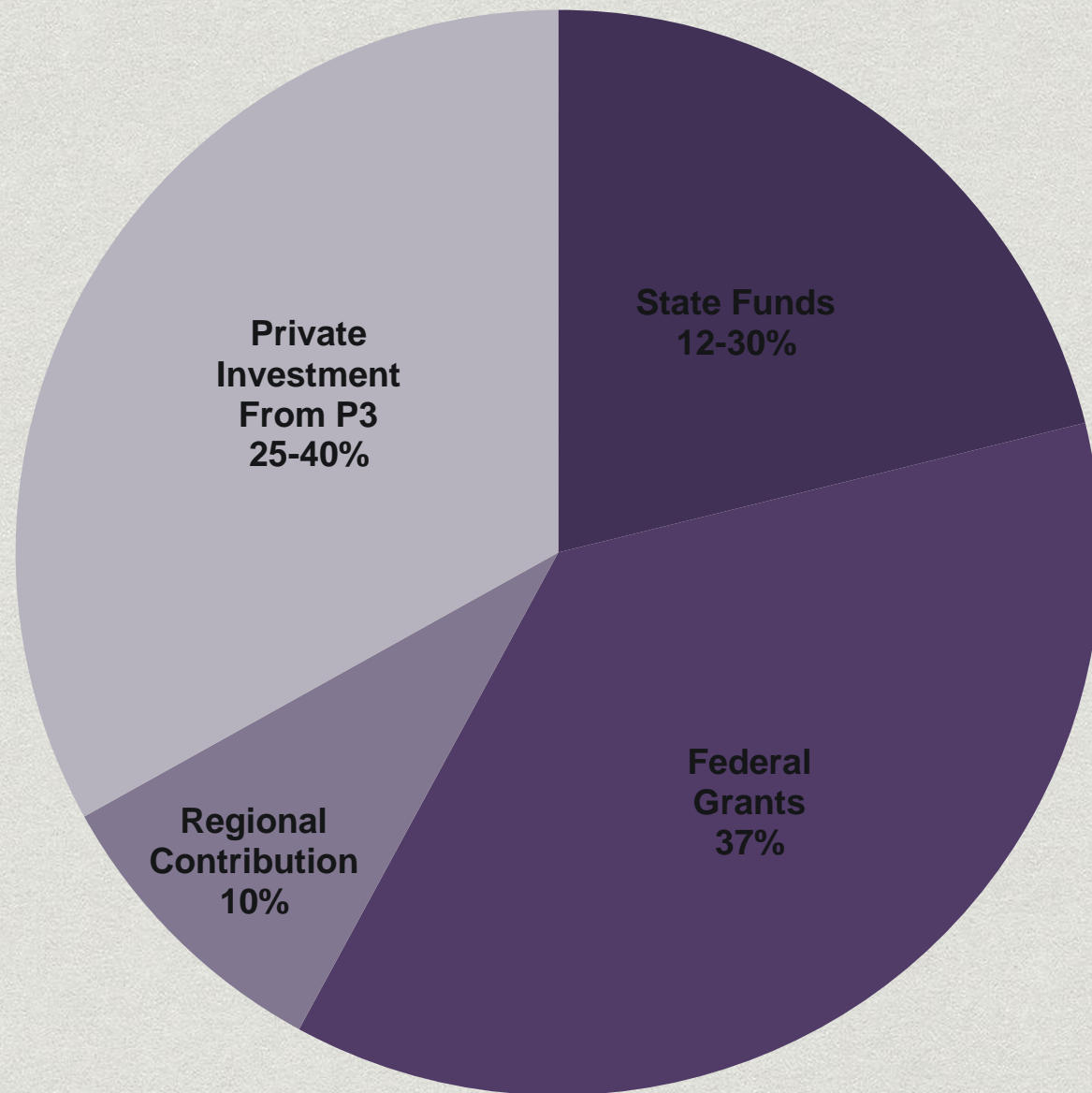
- Will Connect to Metro Red, Green and Orange Lines; MARC, AMTRAK, and other local bus services

- Major stakeholders include MTA, M-NCPPC, SHA, Montgomery and Prince George's Counties, Local Municipalities, Business Community, Local Communities

OVERVIEW: PURPLE LINE

- * Ridership: Over 65,000 Riders Daily
- * Two Maintenance and Storage Facilities
- * Construction Cost: \$2.3 Billion
- * 6,300 Direct Jobs During Construction Period (5-Years)
- * Thousands Indirect Jobs
- * Frequency of Service: 6 minutes (Peak-hours), 10 minutes (Off-Peak Hours)
- * The Purple Line will operate mainly in dedicated or exclusive lanes, allowing for fast, reliable transit operations.

PROJECT FUNDING



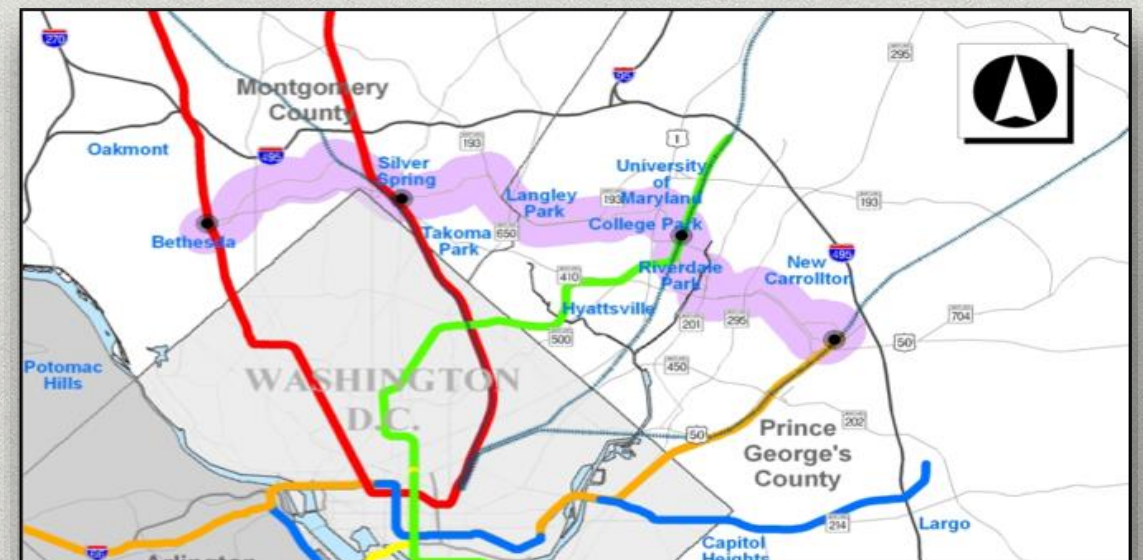
- **Federal Grant: \$900 Million**
- **State Funds: \$300-700 Million**
- **Private Investment: \$600 Million - \$1 Billion**
- **Regional Contribution: \$220 Million**

SCHEDULE

Request for Info/Industry Outreach	2013	✓
BPW Approval as P3	Fall 2013	✓
Request for Qualifications	Fall 2013	✓
Shortlist	Winter 2014	✓
RFP	Summer 2014	✓
Selection of Preferred Partner	Winter 2015	
Commercial Close	Spring 2015	
Financial Close	Summer 2015	
Design/Construction	Upon Close	
Commissioning	+/- 4 years	
Revenue Service	+/- 5 years	

PROJECT BENEFITS

- * Provide Faster and Reliable Transit to the Region
- * Increase Service Options for Transit Dependent
- * Strengthen and Revitalize Communities in the Corridor
- * Stimulate Economic Development
- * Improve Connectivity Between Activity Centers and Planned Development
- * Increase Potential for TOD at existing and Proposed Stations in the Corridor



DRAFT PURPLE LINE COMMUNITY COMPACT

The **draft** Purple Line Community Compact (PLCC) articulates the collective vision between all stakeholders including the current and future residents, workers, and businesses within the Prince George's and Montgomery Counties, the state of Maryland, and the Metropolitan Washington region for the Purple Line.

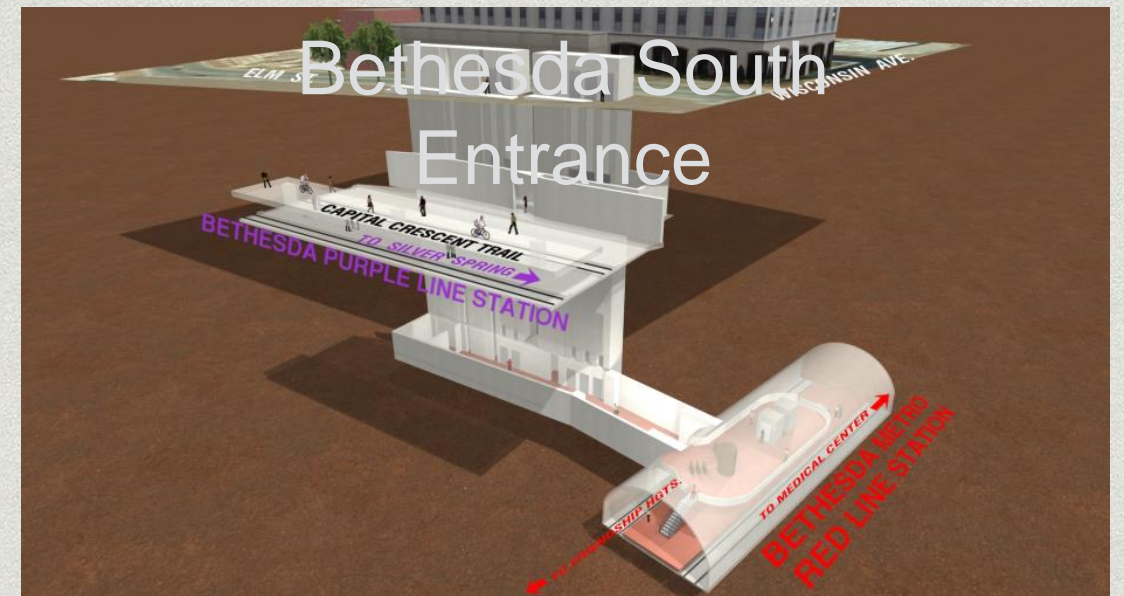
The Purple Line presents opportunities to:

- Create Temporary and Permanent jobs
- Stimulate Regional Economic Growth
- Increase Housing Options
- Create a Healthy and Attractive Physical Environment



COORDINATION WITH METRO

- * Opportunities for Coordinating Metrobus Service in Purple Line Corridor
- * Station Area and TOD Planning
- * Expanding the Transportation Network in the Region
- * Alternative Transit to Metro System
- * Capacity Building & Support



PROJECT STATUS

Environmental Approval in 2013

FTA New Starts

- * Entry into Preliminary Engineering in October 2011
- * Entry into Engineering in August 2014
- * Recommended for full funding in FY 2015 budget
- * FTA ranks the overall project Medium/High (60 Current Projects Overall)

Public-Private Partnership (P3)

- * Approved by BPW in November 2013
- * Shortlisted proposers in January 2014
- * Proposals due March 2015

PROJECT STATUS

New MDOT Secretary Pete Rahn

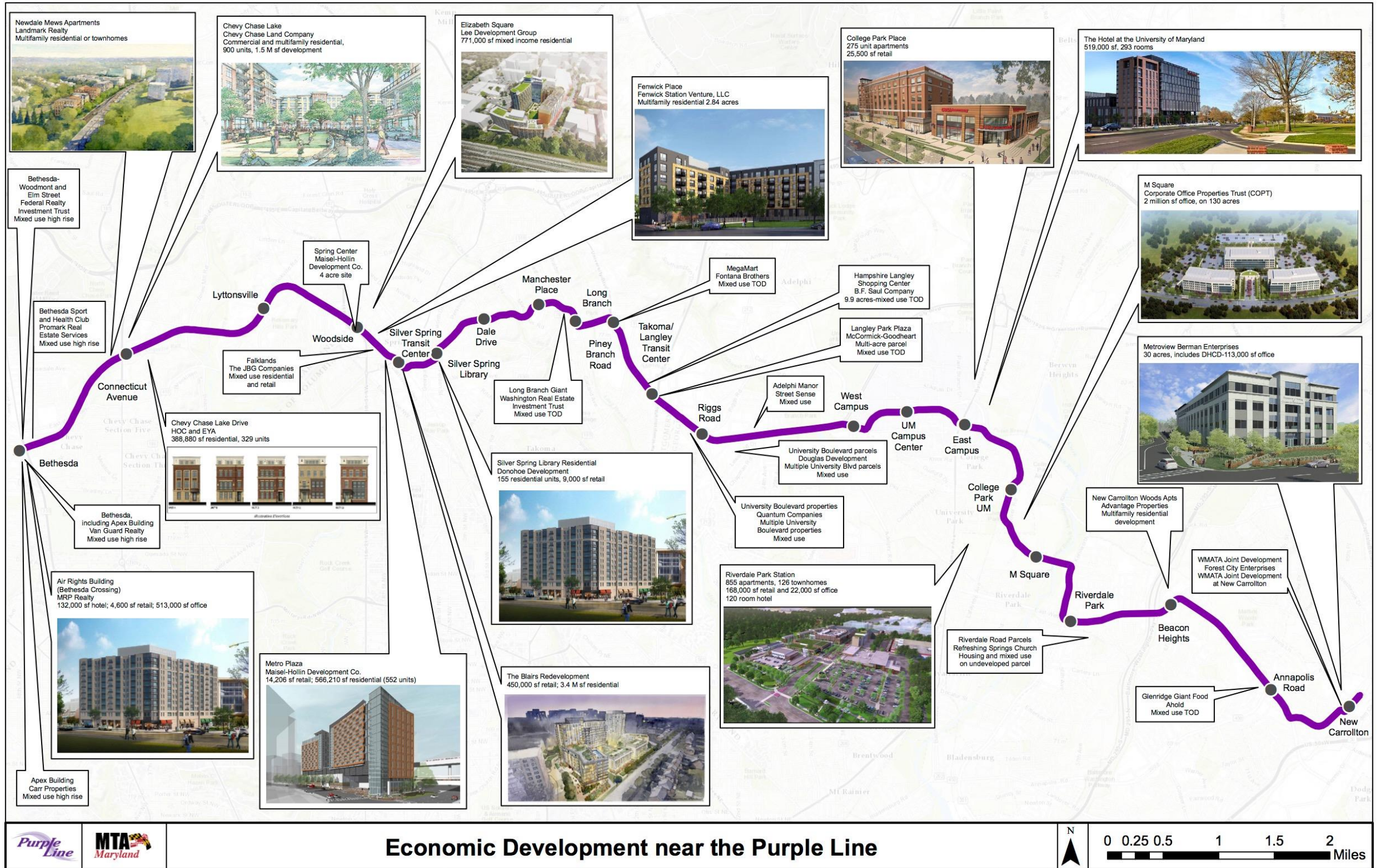
- * Reviewing Red and Purple Lines
- * Hopes to provide recommendation to Governor within “90 days”
- * Will weigh ongoing costs to operate compared to revenue
- * Information from Maryland Reporter article, “New Transportation Secretary Hopes to Have Purple and Red Line Review Done in 90 Days,” by Rebecca Lessner.

PROJECT HIGHLIGHTS

- * Federal Funding in December 2014 Included \$100 Million for Purple Line
- * Formal MOU Under Development for Major Stakeholders
- * Public Outreach Continues With Focus on Wayne Avenue in Silver Spring, Chevy Chase, Riverdale Park, and Businesses in the University Boulevard Corridor
- * MOU executed with DLLR to jointly implement workforce development programs in support of the Purple Line's targeted hiring needs

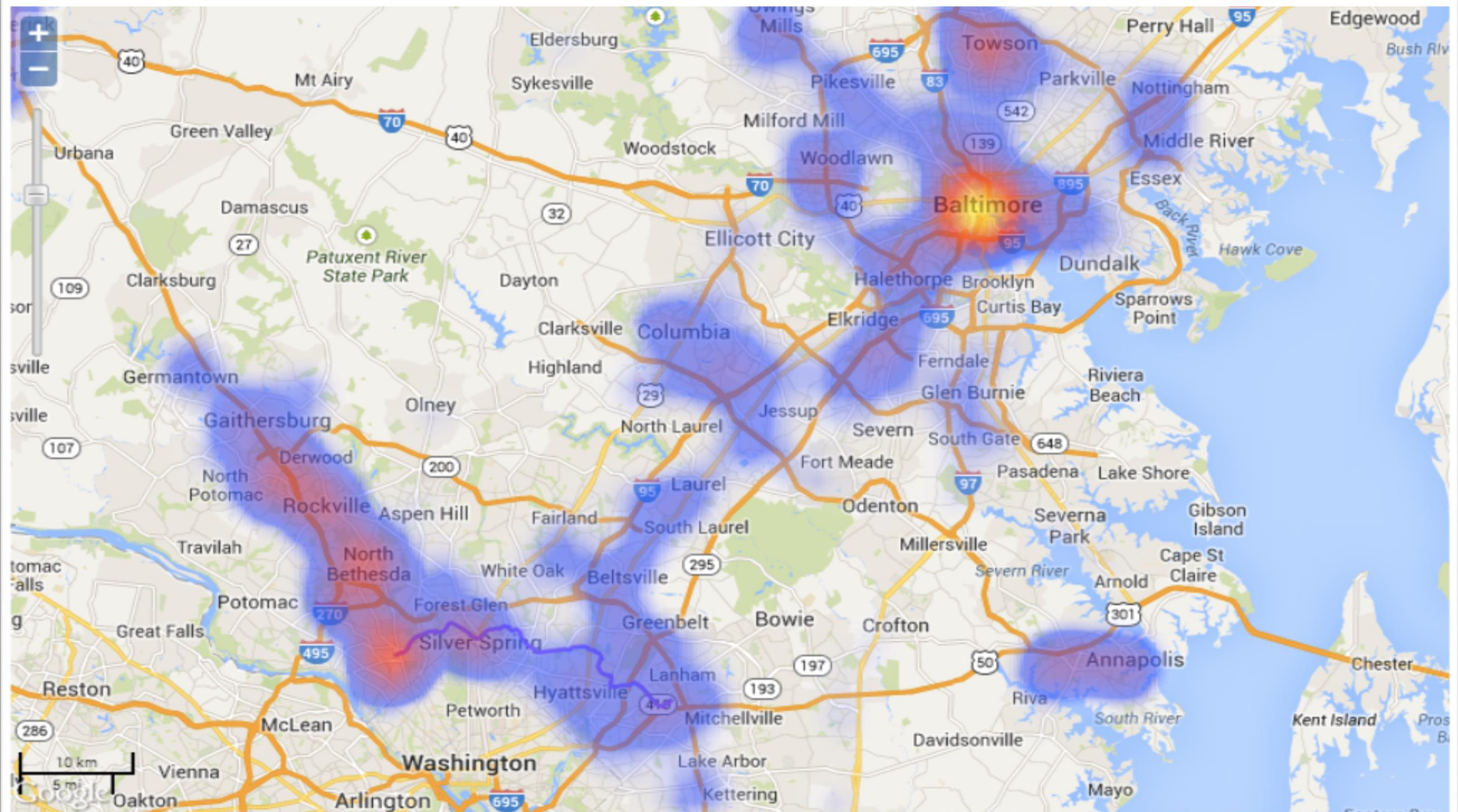
ECONOMIC IMPACT

- * This project is a long-term endeavor that requires extensive and continuing commitments from federal, state, and local governments, as well as the private sector.
- * Opportunity to capitalize on the \$2.4 billion investment.
- * [Boost Jobs in Maryland](#) (UMD Studies - Target Job Hubs). Even without the Purple Line, the two-county region is expected to grow by more than 350,000 jobs over the next two decades.
- * The Purple Line will also:
 - * Thread together **four major employment centers**—Bethesda-North Bethesda, Silver Spring, College Park/Route 1 and New Carrollton.
 - * Help to spur and sustain small businesses
 - * Stimulate over 27,000 new permanent jobs
 - * Increase property values along the line by \$9.8 billion

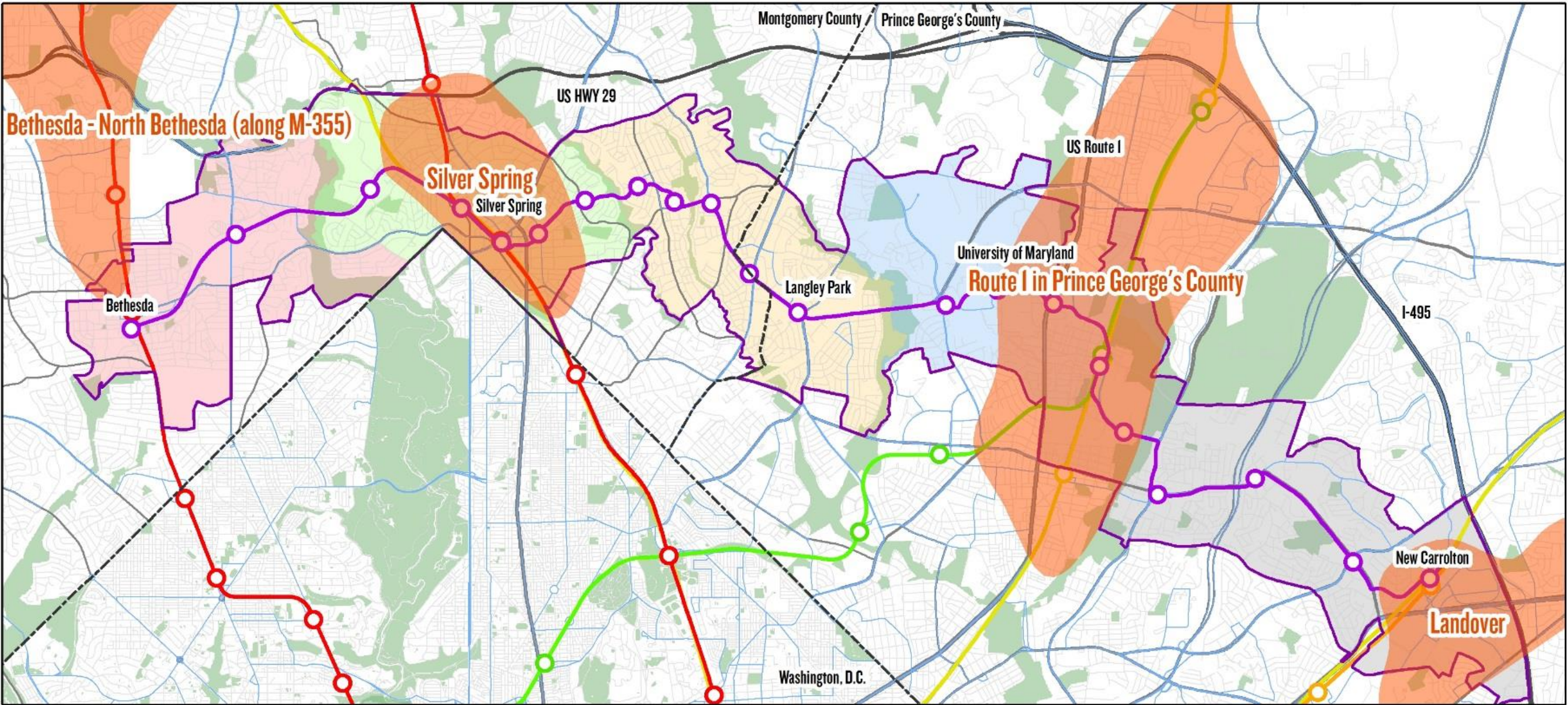


CORRIDOR

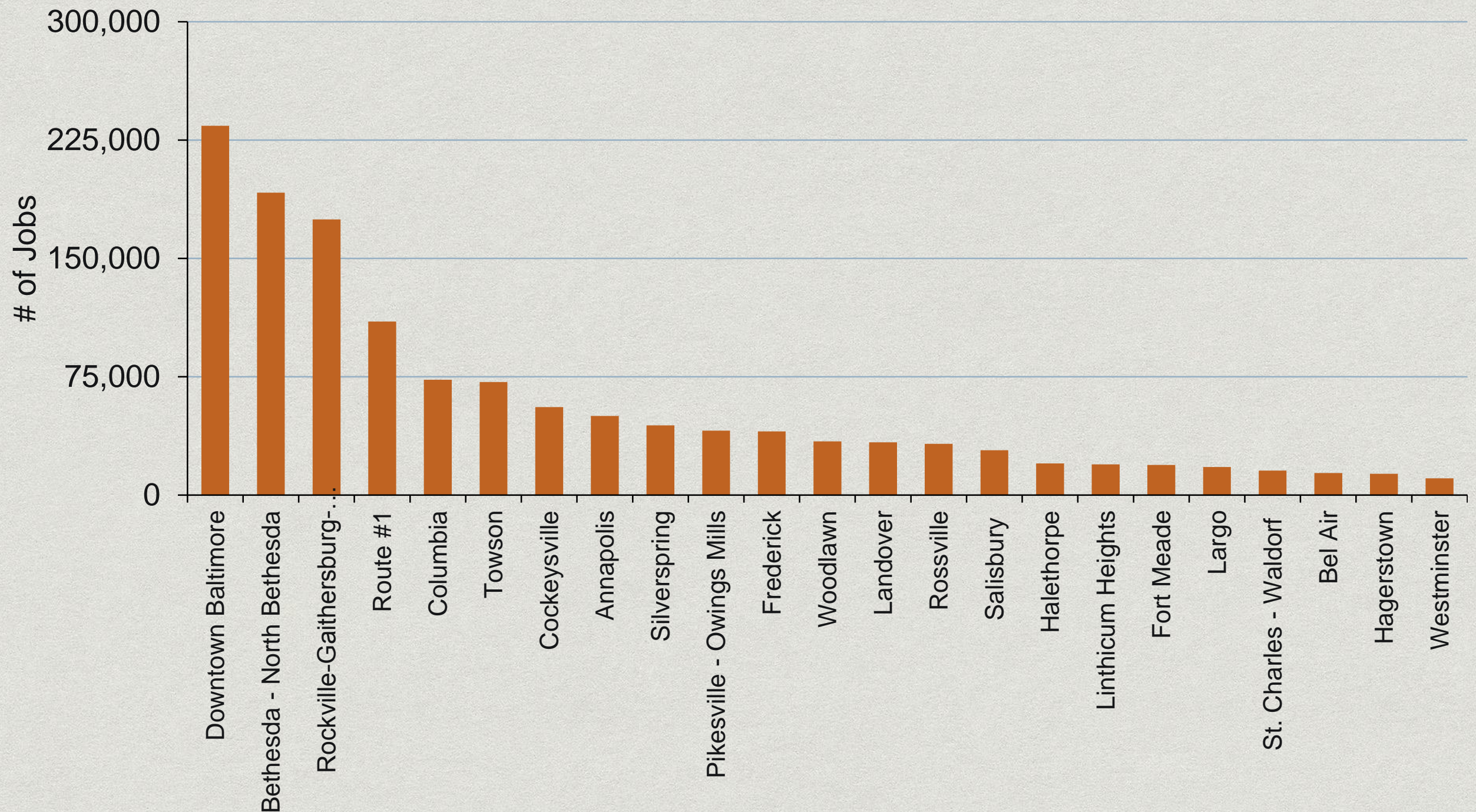
Employment “Heat Map”



Access to Employment Clusters



CLUSTER EMPLOYMENT



Research Institutes Near UMD

